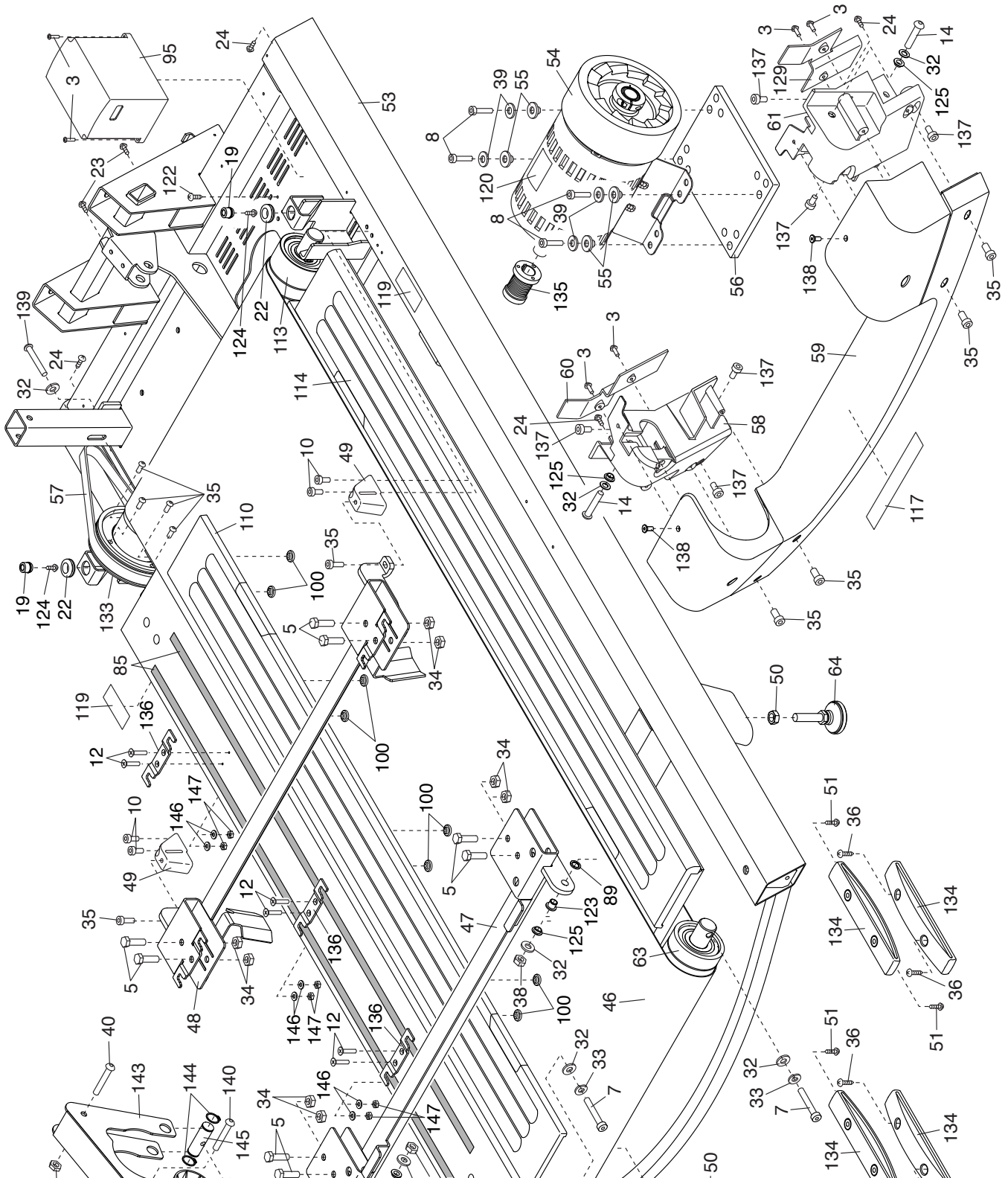


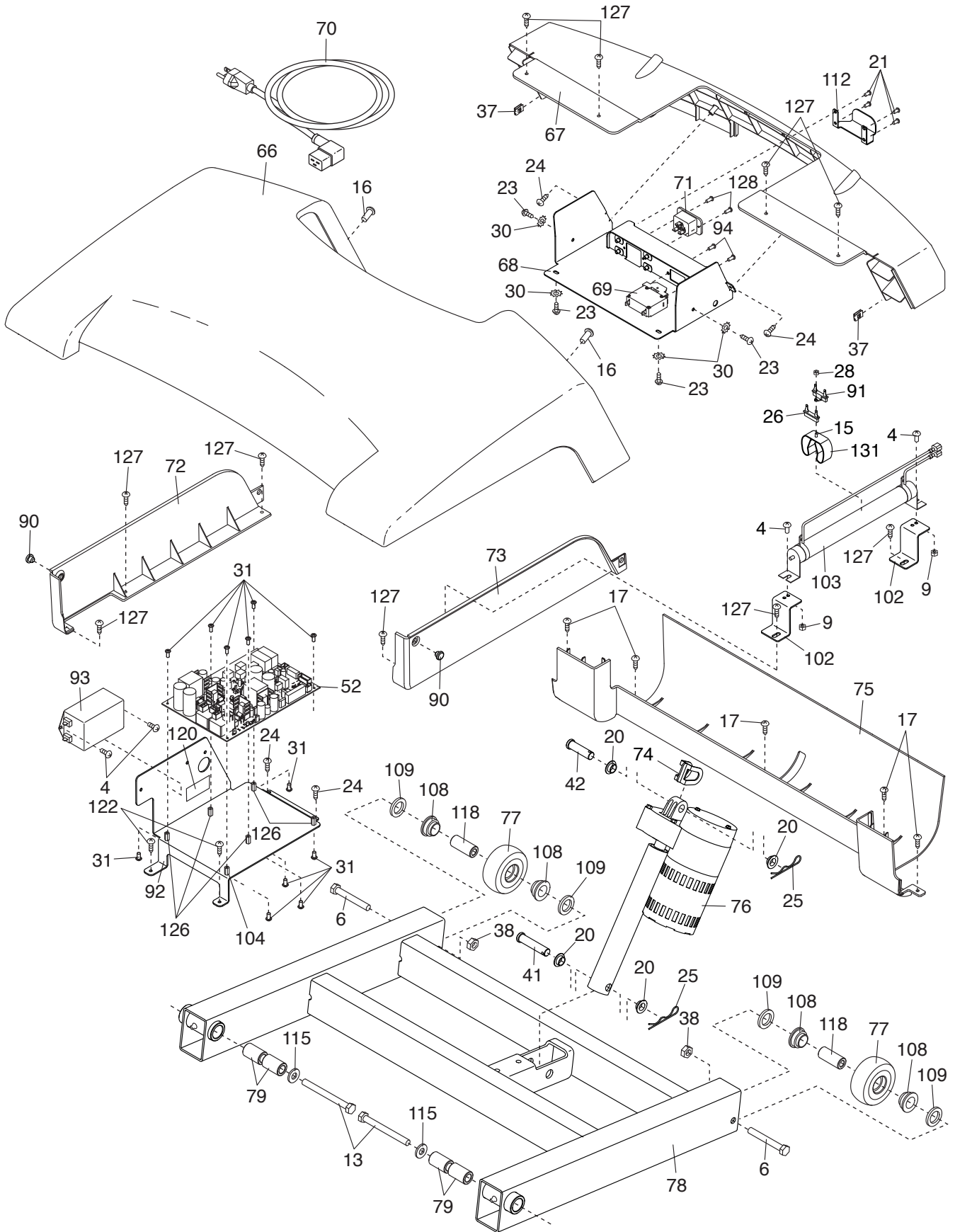
# EXPLODED DRAWING A

Model No. FMTL39818.5 R0518A



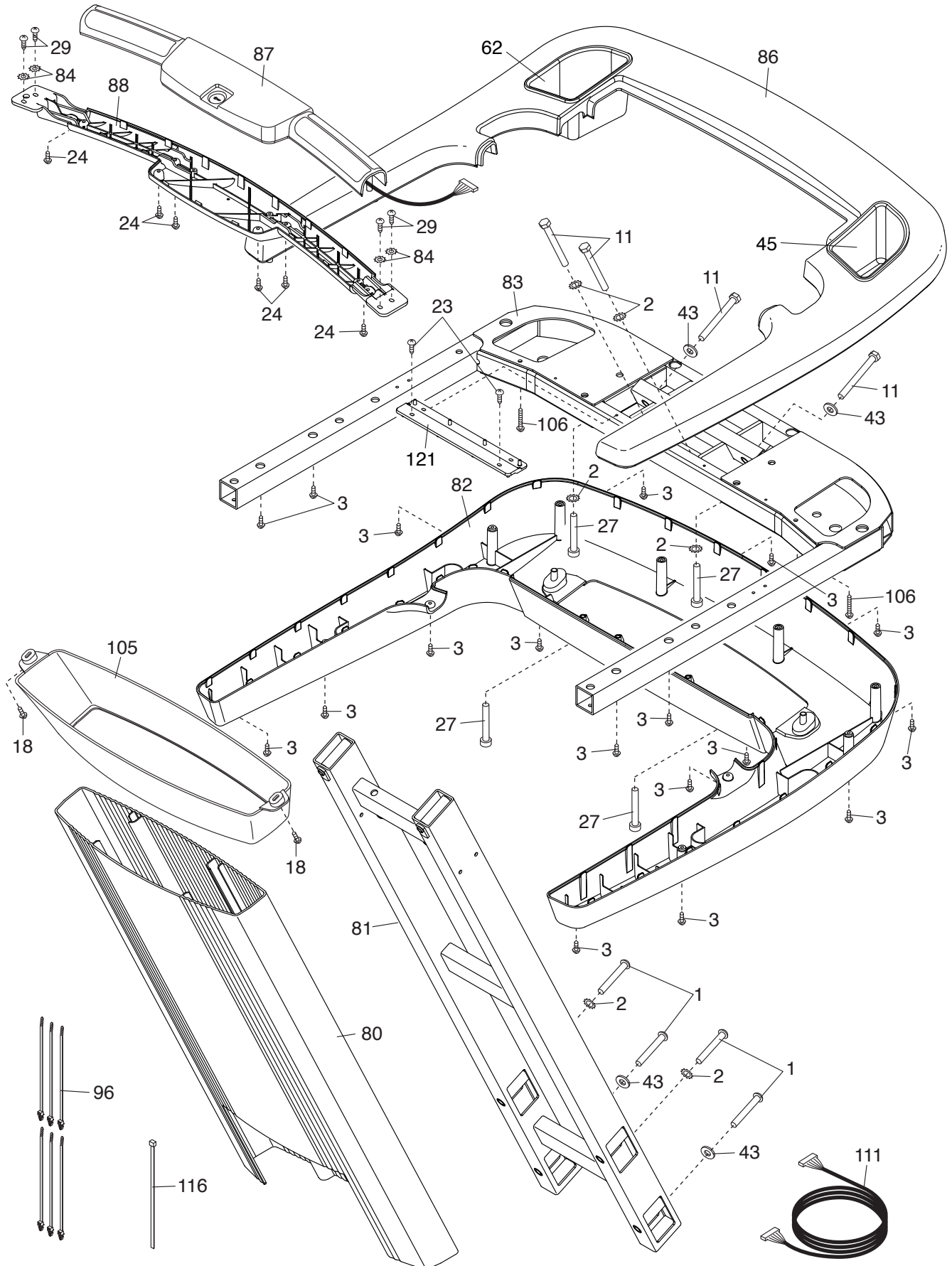
# EXPLODED DRAWING B

Model No. FMTL39818.5 R0518A



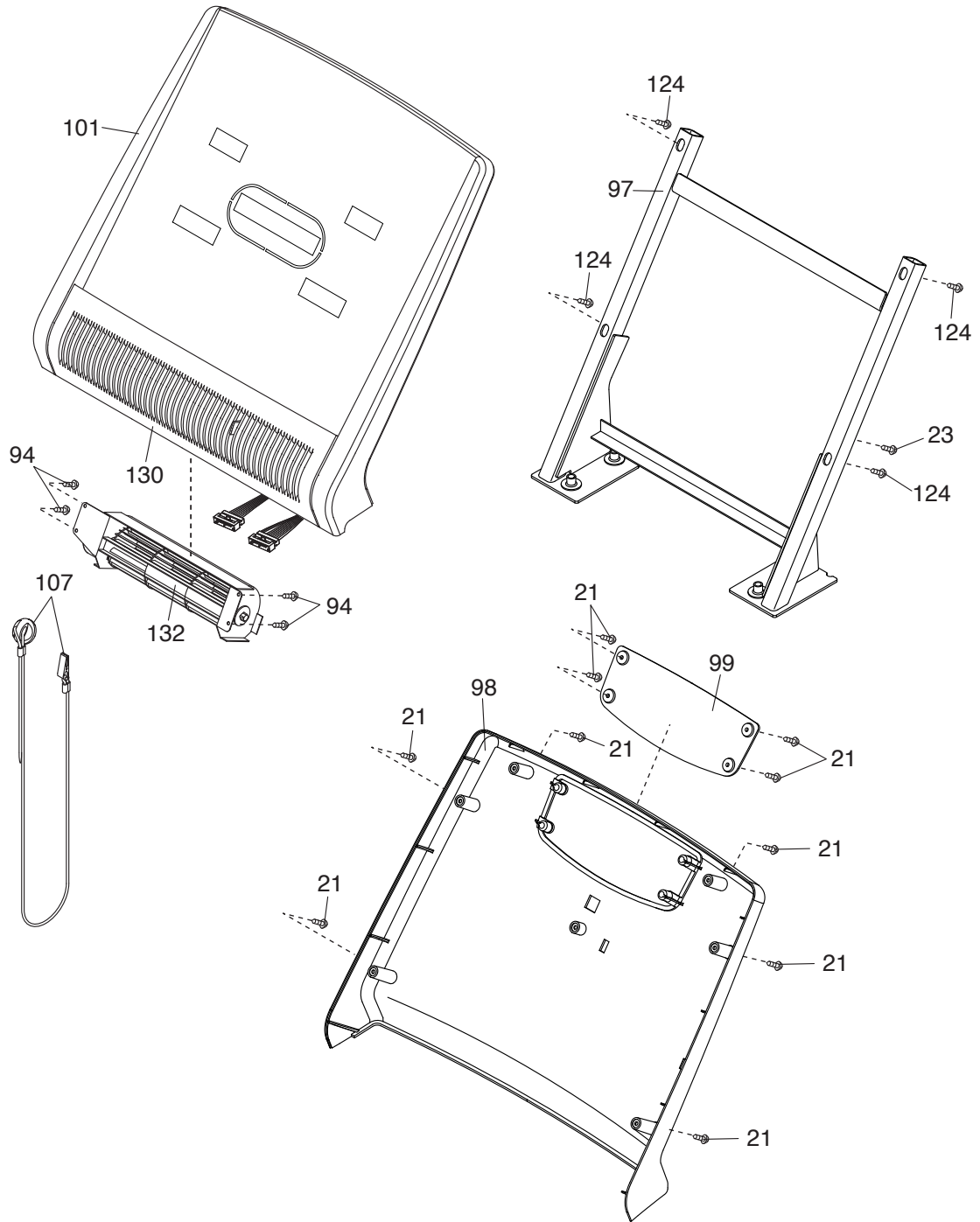
# EXPLODED DRAWING C

Model No. FMTL39818.5 R0518A



# EXPLODED DRAWING D

Model No. FMTL39818.5 R0518A



Bubble#	OEM Number	Description	Qty Required
1	110375	3/8" X 3 1/4" SCREW	4
2	243679	3/8" STAR WASHER	6
3	312103	#8 X 5/8" MACHINE SCREW	24
4	321301	#8 X 3/8" MACHINE SCREW	4
5	181980	3/8" X 1 3/4" BOLT	8
6	174804	3/8" X 2 1/2" BOLT	2
7	412852	3/8" X 3" SCREW	2
9	12152	#8 NUT	2
10	225696	1/4" X 1 1/4" SCREW	4
11	396505	3/8" X 4" SCREW	4
13	100552	1/2" X 3 1/2" SCREW	2
15	398609	M3 X 12MM BOLT	1
16	13484	5/16" X 1/2" SCREW	2
17	13162	#8 X 1/2" TEK SCREW	5
18	276104	#8 X 5/8" SCREW	2
20	195127	1/2" BUSHING	4
21	130853	#8 X 1/2" MACHINE SCREW	14
23	107428	#8 X 3/4" PAN HD TEK SCRW	9
24	13576	#8 X 1/2" SCREW	14
28	167708	M3 NUT	1
29	155153	#10 X 3/4" SCREW	4
30	14157	#8 STAR WASHER	4
32	262891	3/8" WASHER	7
33	112006	3/8" LOCK WASHER	2
34	119425	3/8" NUT	8
36	150508	#10 X 1" SCREW	4
37	133333	CAP CLIP	2
38	12149	3/8" LOCKNUT	4
39	261150	5/16" FLAT WASHER	4
43	129478	3/8" FLAT WASHER	4
46	419087	WALKING BELT	1
49	268058	FRONT PLATFORM CUSHION	2
50	304905	1/2" NUT	2
51	364897	#16 X 1 1/2" SCREW	4
52	401531	CONVERTER BOARD	1
55	272487	MOTOR BUSHING	4
56	272574	MOTOR MOUNTING PLATE	1
57	275108	MOTOR BELT	1
60	295050	LEFT CAP INSERT BRACKET	1
63	387091	IDLER ROLLER	1
65	139996	5/16" NUT	1
69	297707	POWER SWITCH	1
71	184097	RECEPTACLE	1

72	270001	LEFT SIDE COVER	1
73	270002	RIGHT SIDE COVER	1
75	270003	ROLLER COVER	1
76	384194	INCLINE MOTOR	1
77	195062	FRONT WHEEL	2
84	14088	#10 STAR WASHER	4
85	406800	FOOT RAIL PAD	4
92	391197	ELECTRONICS BRACKET	1
93	CC2137	FILTER	1
94	CC1521	#6 X 1/4" SCREW	6
95	353881	CONTROLLER	1
96	116926	CABLE TIE	6
98	304958	CONSOLE BACK	1
103	287043	RESISTOR	1
105	311463	UPRIGHT COLLAR	1
106	312102	#8 X 2" SCREW	2
108	194996	WHEEL BUSHING	4
111	312107	UPRIGHT WIRE	1
112	396415	POWER CORD COVER	1
113	391238	DRIVE ROLLER	1
115	184122	1/2" WASHER	2
116	116566	15 1/2" WIRE TIE	1
117	271317	LARGE WARNING DECAL	1
118	268050	WHEEL AXLE	2
119	213350	CAUTION DECAL	2
120	191291	VOLTAGE WARNING DECAL	2
122	183824	#8 X 1/2" PAN HEAD SCREW	3
124	242356	#8 X 3/4" SCREW	6
127	13300	#8 X 3/4" WSHR HEAD SCREW	10
128	CC1087	#6 X 1/2" SCREW	2
129	295049	RIGHT CAP INSERT BRACKET	1
131	393563	SWITCH BRACKET	1
133	390905	DRIVE ROLLER PULLEY	1
134	364314	PLATFORM CUSHION	4
140	150148	3/8" X 2 3/8" SCREW	1
144	143742	SNAP RING	2
145	363871	IDLER ARM PIN	1
146	14122	#10 WASHER	12
147	203295	#10 NUT	12
137C	14041	5/16" WASHER, UPPER SCREW	4
138A	CC1040	1/4" X 1/2" SCREW	4
N/A	16017	ADHESIVE TIE BLOCK	1
N/A	16057	8" CABLE TIE	4
N/A	123945	TECH SHEET ENVELOPE	1

N/A	146119	FLOOR MAT	1
N/A	239969	DECAL, WRNG PWR CORD, FCA	1
N/A	240351	8" WIRE TIE	5
N/A	276045	WARNING DECAL, FCA	1
N/A	312181	DECAL, BILINGUAL WARNING	1
N/A	<b>380768</b>	WALKING BELT LUBE	1
TA11	<b>CC2201</b>	12" BLACK WIRE, F/F	1
TA12	253582	25" WHITE WIRE, F/F	1
TA13	290873	12" WHITE WIRE, F/SPD	1
TA15	253583	25" BLUE WIRE, F/F	1
TA16	<b>CC2192</b>	4" WHITE WIRE, M/SPD	1
TA17	<b>CC2194</b>	4" BLACK WIRE, M/SPD	1
TA18	<b>CC2193</b>	4" RED WIRE, M/SPD	1
TA19	253581	11" BLUE WIRE, F/SPD	2
TA2	<b>CC2275</b>	7 & 8 PIN WIRE HARNESS	1
TA20	<b>CC2195</b>	5" BLUE WIRE, M/SPD	1
TA21	253585	8" GREEN/YLLW WIRE	1
TA23	296341	14" GREEN/YLLW WIRE	1
TA24	CC2202	10" GREEN/YLLW WIRE	1
TA30	398426	3" BLUE WIRE, F/F	1
TA5	<b>174784</b>	12" GREEN WIRE, R/R	1
TB4	215822	4" GREEN WIRE, M/R	1